



South Broadway

Six Streets and Fifth Avenue:
Lessons from the ethnic main streets of Los Angeles



Little Tokyo



The Watts Towers



St. Elmo's Village



Chinatown



Lessons from the ethnic main streets of Los Angeles

The ethnic main streets of Los Angeles are only a few concentrated blocks long, each. We must concentrate our efforts, beginning between Sixth and Tenth Streets.

As in Los Angeles, the entire Gainesville and Alachua County community—not just the neighborhood or our African-American community-- will be needed to make Fifth Avenue commercially viable.

The most commercially successful streets in Los Angeles were visually and spatially complex. Our challenge will be to propose a storefront system that creates a sense of wonder without dangerous visual barriers.

The most vibrant ethnic main streets in Los Angeles had many scales of commerce. We hope to support small and larger scale entrepreneurship on Fifth Avenue.

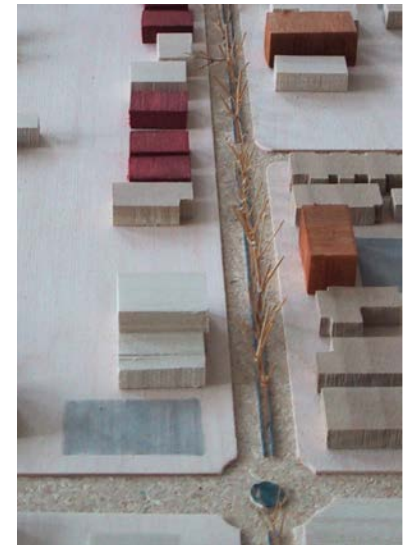
The best streets in Los Angeles had the widest sidewalks. This will be essential, allowing people to shop and visit.

In Los Angeles, the most authentic ethnic main streets are also the least inviting to outsiders. On Fifth Avenue we must find a balance between cultural specificity and cultural exclusivity.

We hope to help the Fifth Avenue/Pleasant Street neighborhood and Gainesville create a street where people choose to interact *despite and because of their differences*.

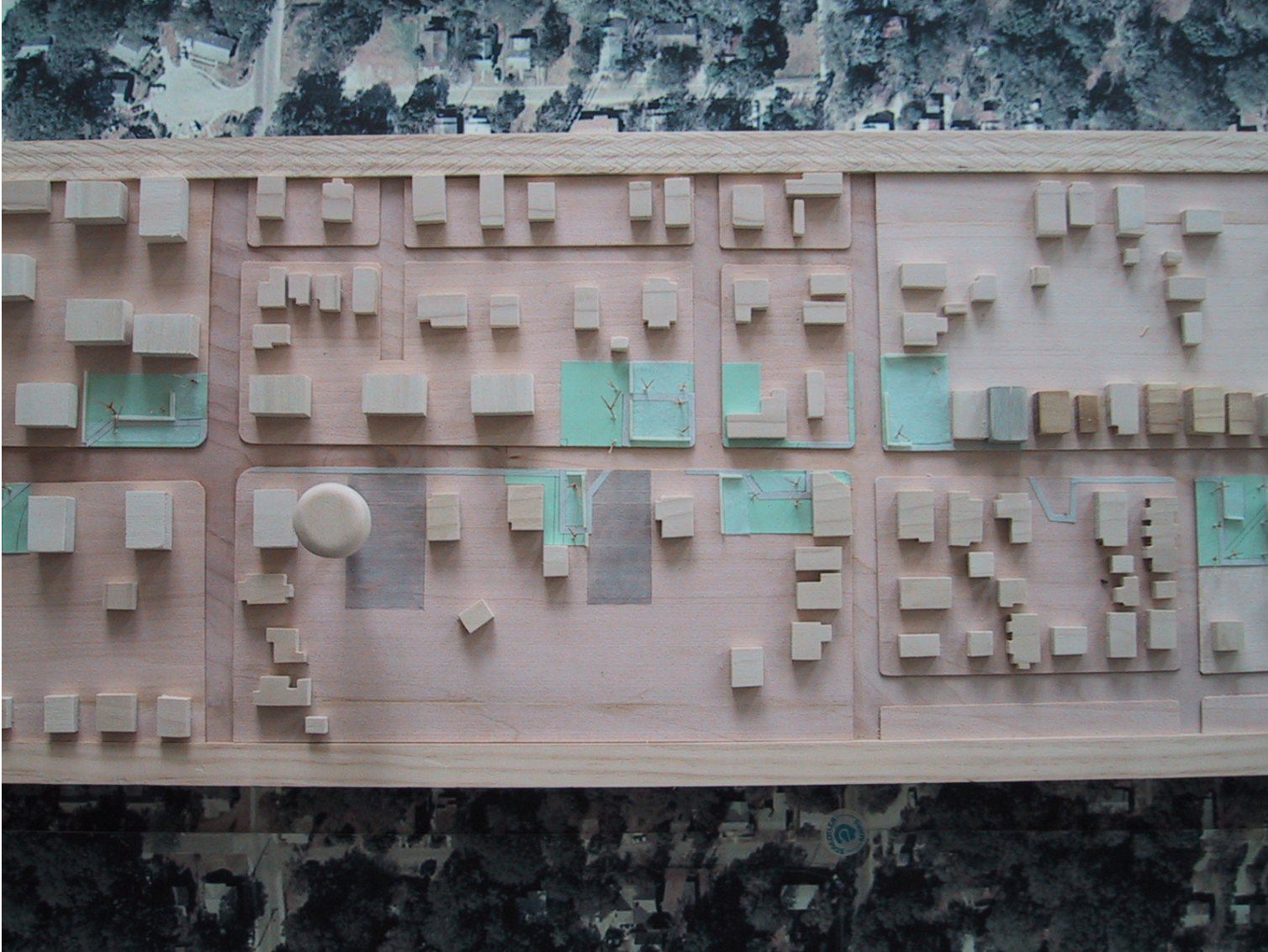


Make Fifth Avenue one way running east.
Enhance the street with a wide landscaped sidewalk and underground utilities





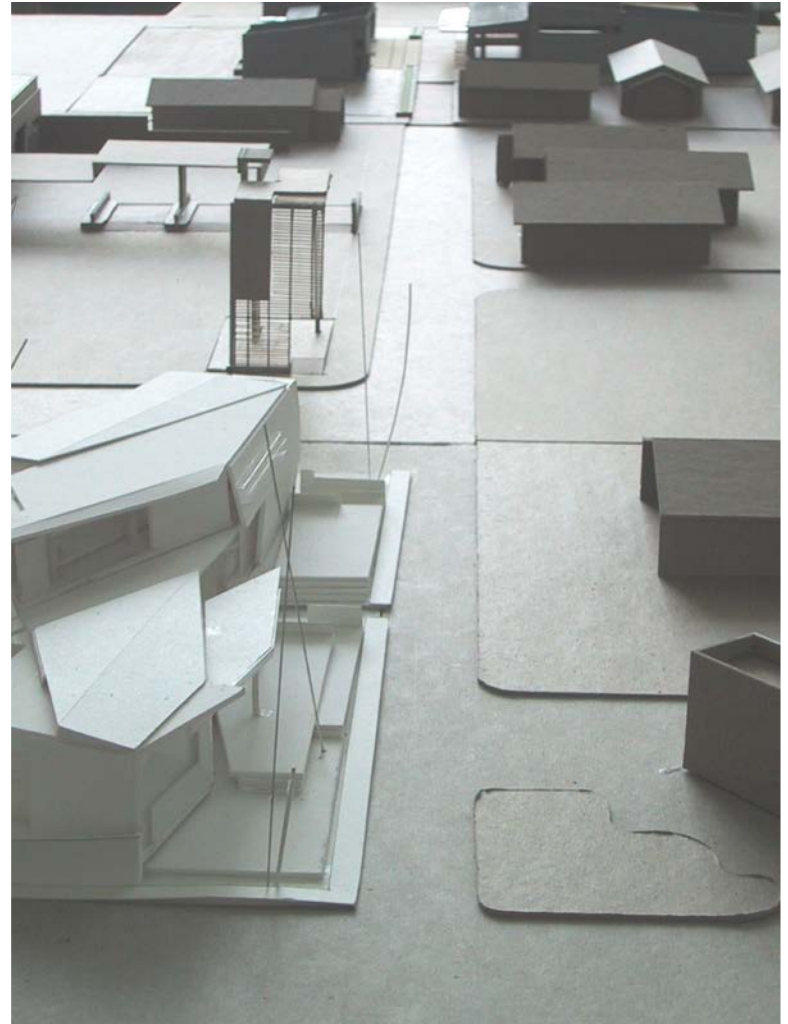
Build out from the corners of important cross streets at Sixth, Eight and Tenth Streets



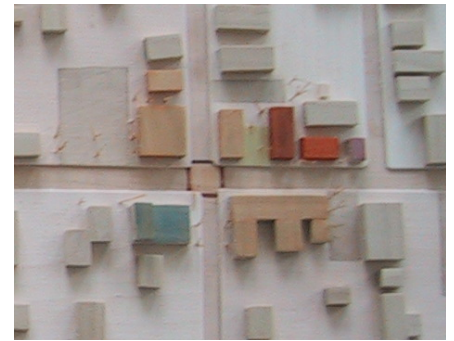
Develop meaningful open spaces, following CPTED principles



Fifth Avenue, looking east



Fifth Avenue, looking west

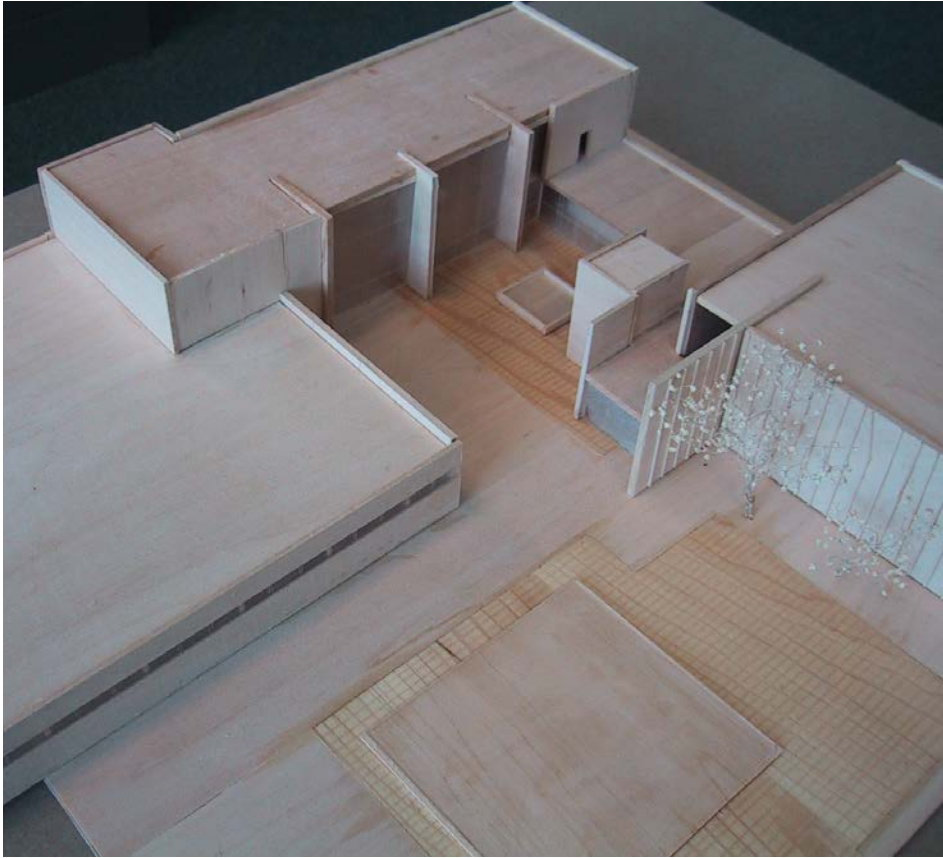


Multi family housing, some with retail space on the street

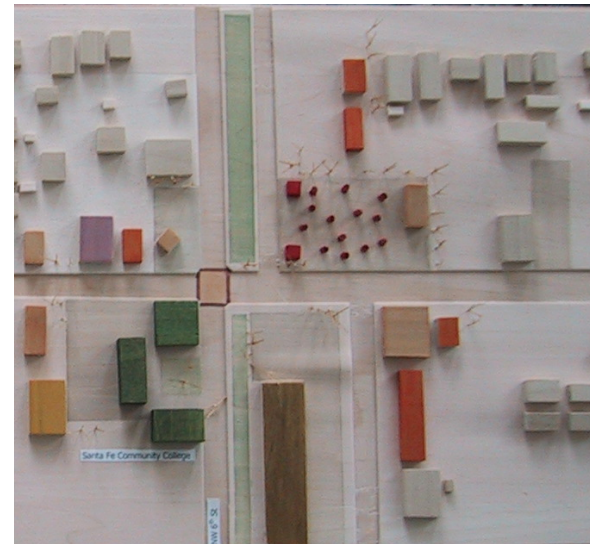
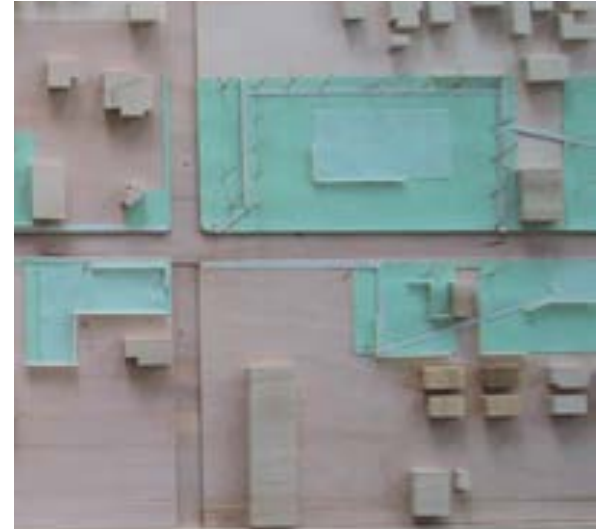




Sustainable infill housing utilizes existing historic housing stock



Auditorium and classrooms for Santa Fe Community College

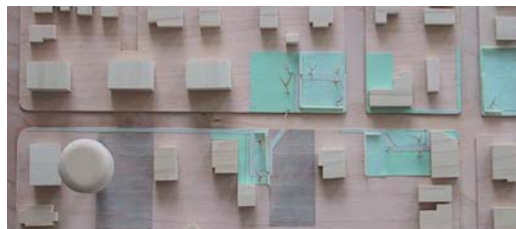
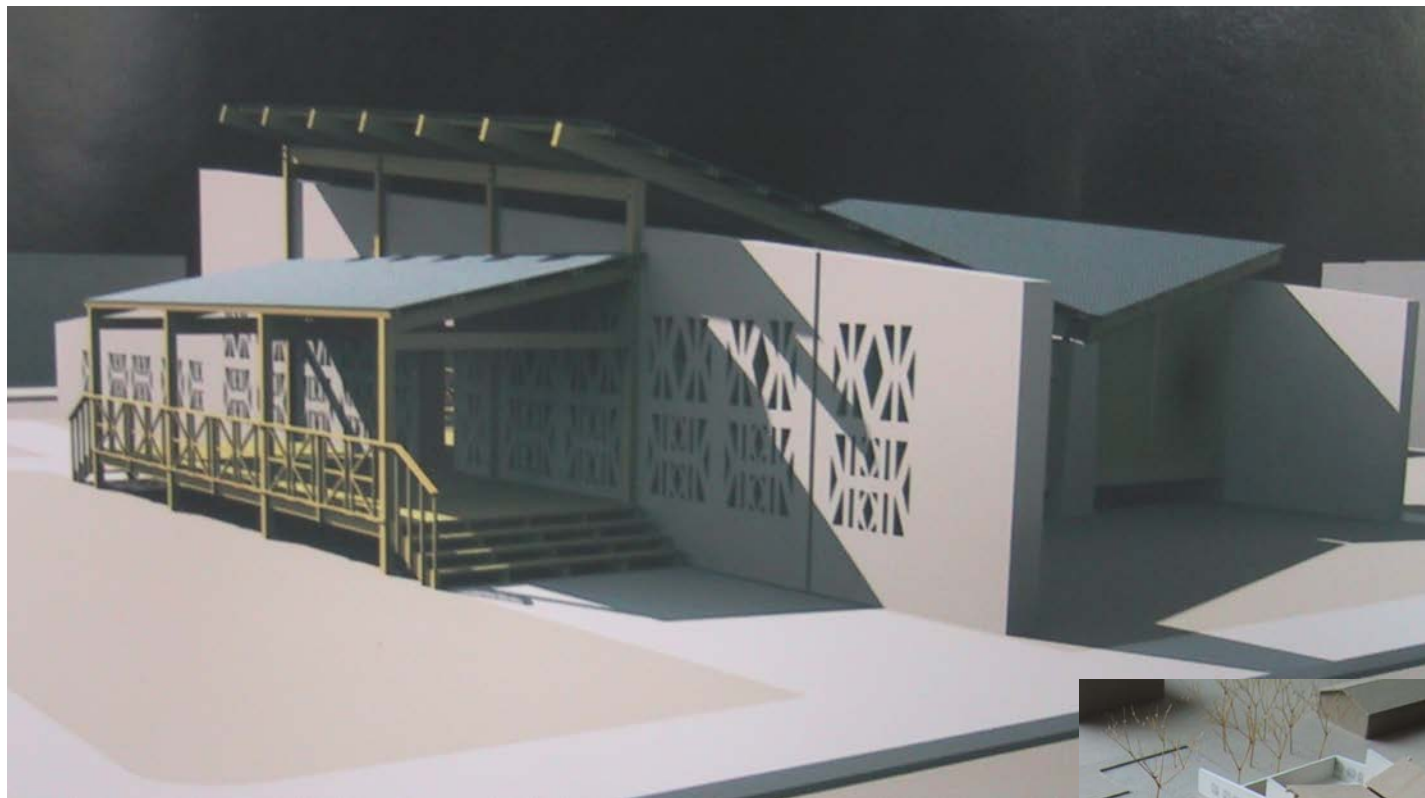




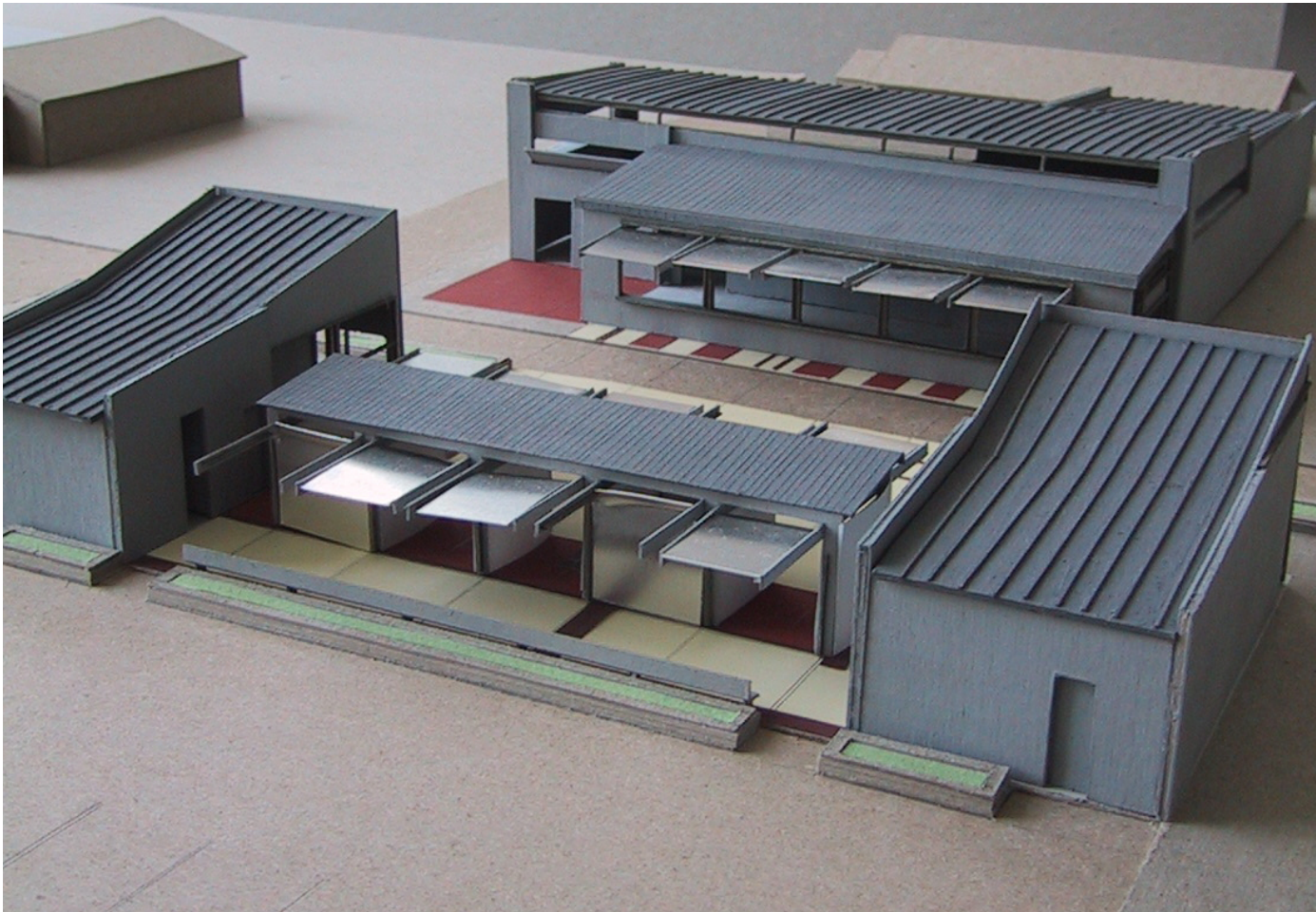
Auto Park:
Automotive repair, education and display, plus an internet site



Story-telling Pavilion as part of a neighborhood history walk



Mixed Use Commercial Spaces:
Grocery store, café, incubator businesses

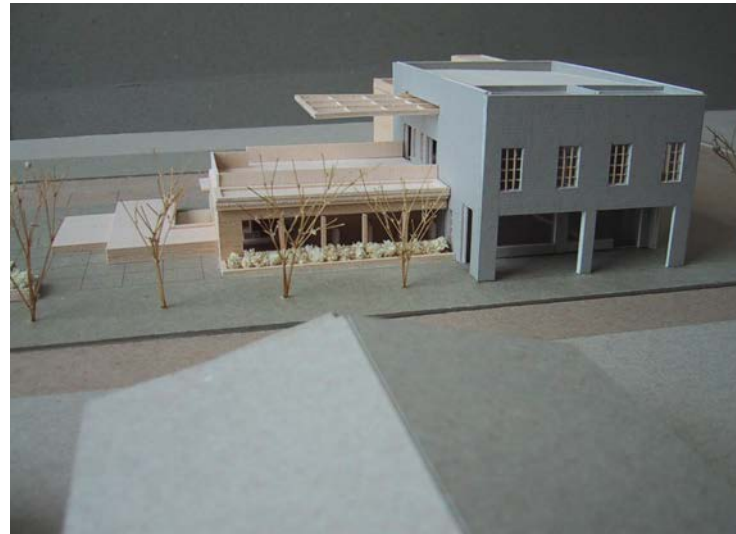




Glover and Gill:
African American Cultural Museum

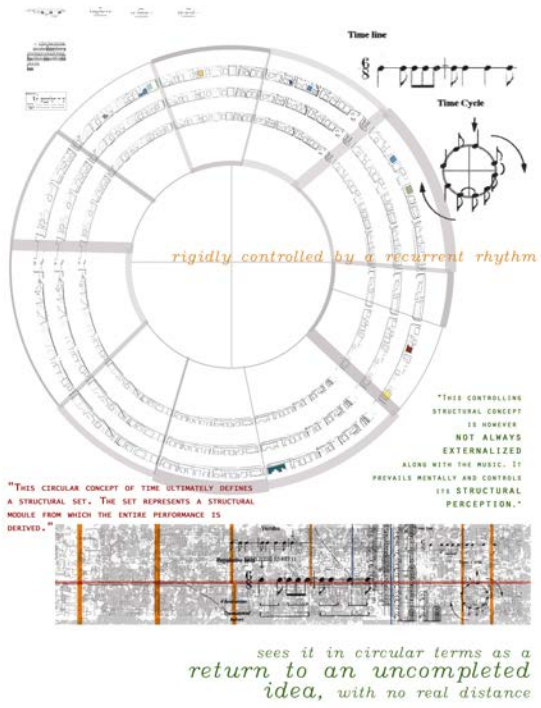


Glover and Gill 1932.
Originally Grocery and Music Hall
35' x 57'
1995 s.f.



Glover and Gill:
Jazz club, children's art space, offices, cafe





An Improvisational Streetscape
 Utilizes the concept of jazz and a mixture of generic and specific elements



Fifth Avenue/Pleasant Street Projects

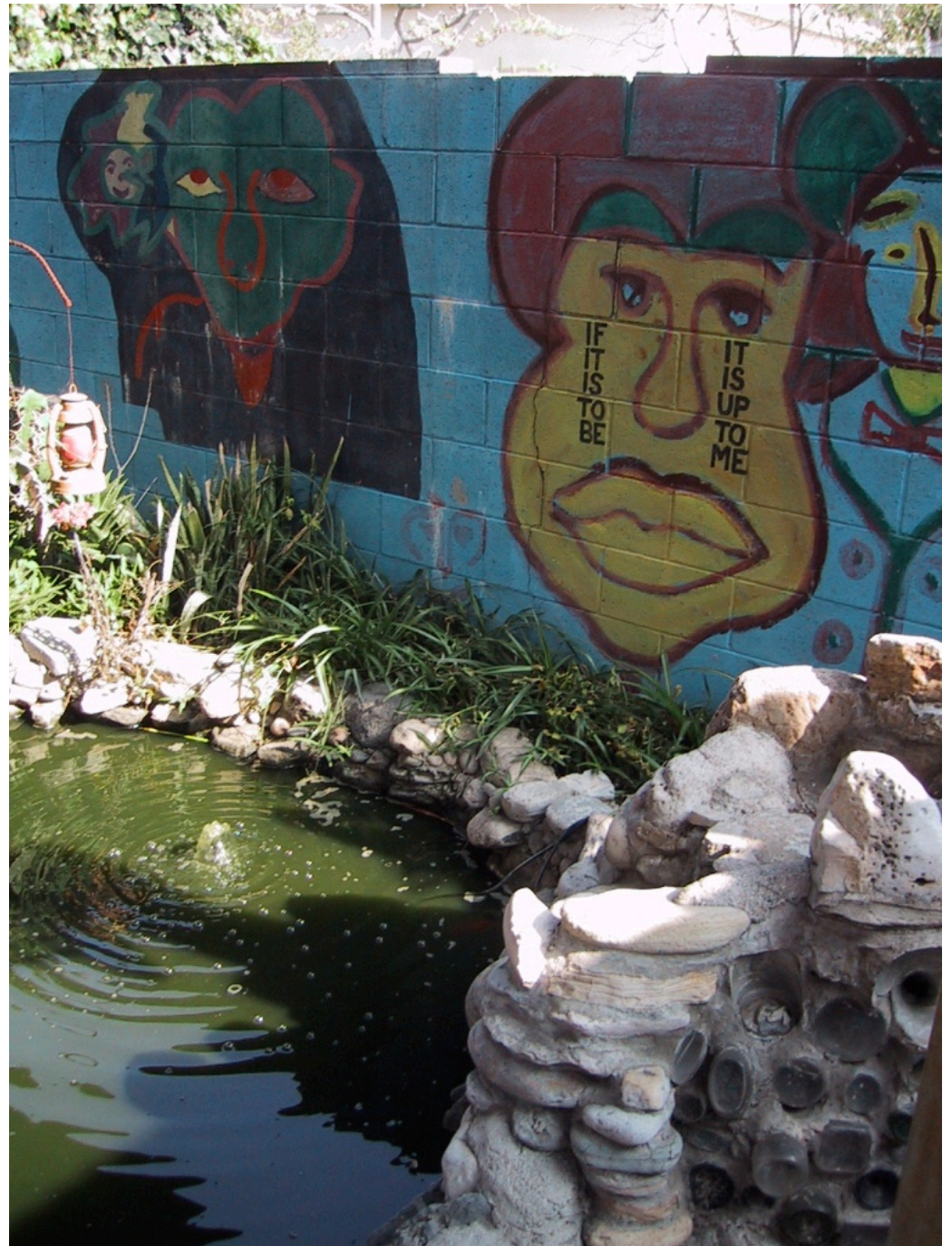
Florida Community Design Center
300 East University Avenue in the Commerce Building

Thursday, June 5, 2003
Presentation 4:00-5:00
Reception 5:00-6:00



**University of Florida Graduate Architecture
Design 2, Spring 2003**

Patrick Bates, Katy Blasser, Audrey Cavadas,
Robert Chang, Angela Cox, David Herbig, Jeff
Huber, Francisco Jarquin, Eric Kleinsteuber,
Andrew Matson, Rebecca Talbert, Leshia Porche
and Professor Kim Tanzer



St. Elmo's Village